

# MONTHLY MEMBERSHIP PROGRESS REPORT

LOCATION PHILIPPINES

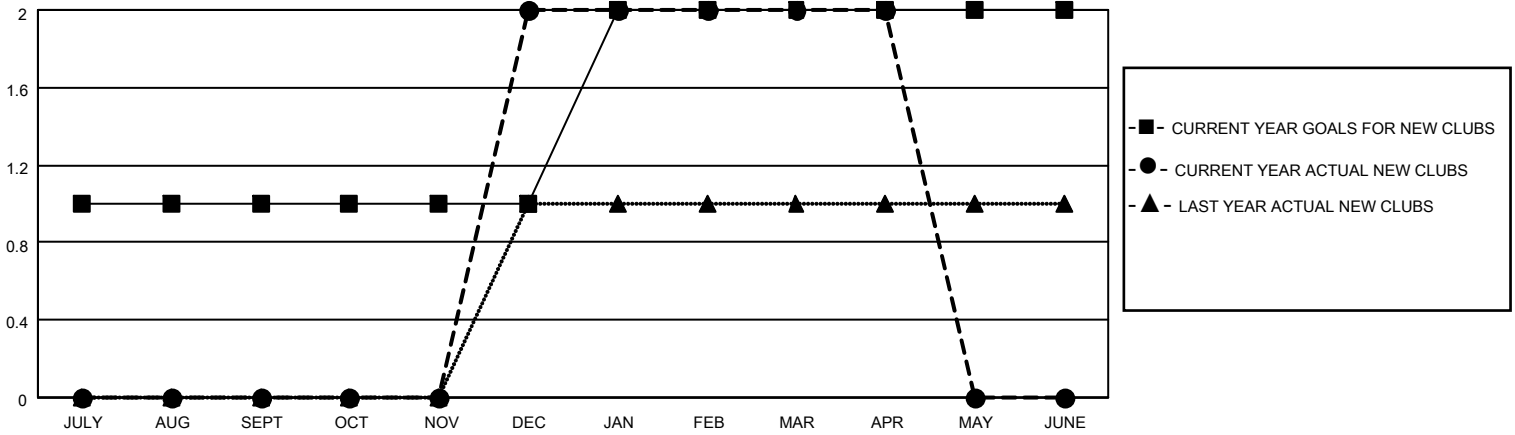
District 301A3

Results as of: 4/30/2022

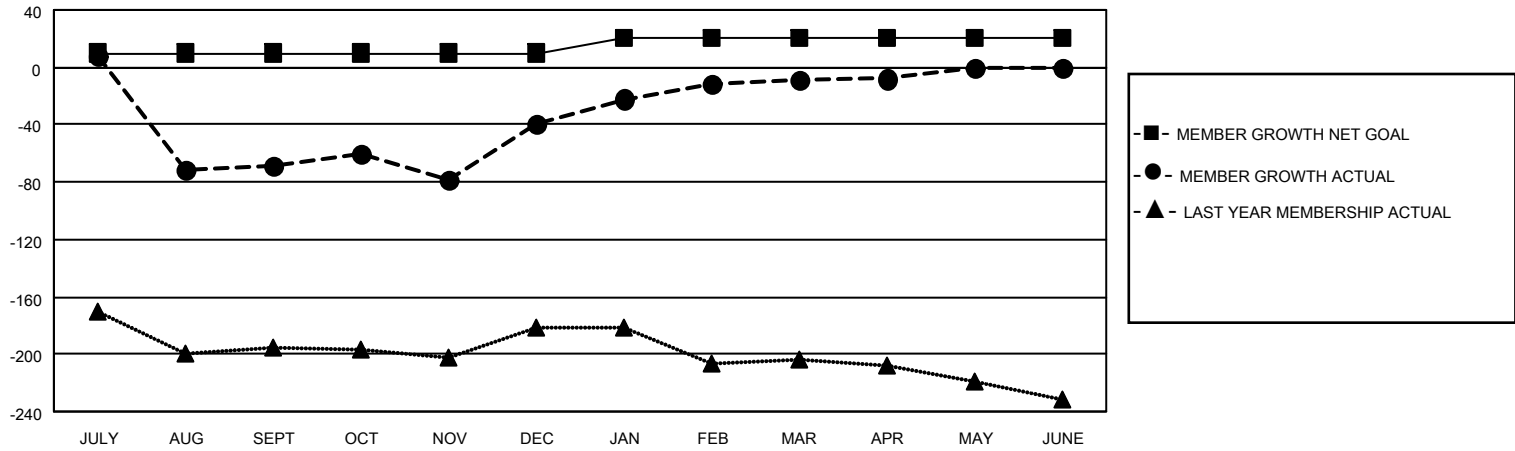
Clubs			
RESULTS FOR 2021-2022			
QUARTER	NEW CLUB GOAL	NEW CLUBS	DROPPED CLUBS
JULY/AUG/SEPT	1	0	5
OCT/NOV/DEC	0	2	0
JAN/FEB/MAR	1	0	0
APR/MAY/JUNE	0	0	0

Members			
RESULTS FOR 2021-2022			
QUARTER	MEMBER GROWTH NET GOAL	MEMBER GROWTH ACTUAL	DROPPED MEMBERS ACTUAL (including transfers)
JULY/AUG/SEPT	10	45	113
OCT/NOV/DEC	0	101	71
JAN/FEB/MAR	10	61	10
APR/MAY/JUNE	0	1	0

**GOALS AND ACTUAL NEW CLUBS CUMULATIVE**



**GOALS AND ACTUAL MEMBERS CUMULATIVE**



**DROPPED CLUBS: 5**

**18 CLUBS OF 40 ADDED 1 OR MORE NEW MEMBERS**

**GENDER DISTRIBUTION**

**DROPPED MEMBERS**

DECEASED	5
CLUB CANCELLED	85
OTHER	104
<b>TOTAL</b>	<b>194</b>

[CLICK HERE FOR CUMULATIVE MEMBERSHIP DATA](#)

MALE	572 (52.29%)
FEMALE	522 (47.71%)
NON BINARY	0 (0.00%)
PREFER NOT TO ANSWER	0 (0.00%)

TOTAL FAMILY UNIT MEMBERS 454

FAMILY MEMBERS PAYING HALF DUES 293